



FAG Special Spherical Roller Bearings with Durotect CK Coating in the Bore

For Vibratory Machinery

FAG

SCHAEFFLER

FAG Spherical Roller Bearings for Vibratory Stresses

Operating conditions for FAG spherical roller bearings in vibratory machinery

Vibratory screens used for grading materials and other vibratory machinery are among the machines subjected to the most severe stresses.

FAG spherical roller bearings with Durotect CK coating in the bore

In order to prevent friction corrosion between the bearing bore diameter and the shaft, FAG supplies spherical roller bearings with Durotect CK coated bores.

This ensures that the possibility of displacement (non-locating bearing function) between the bearing bore and

shaft in response to thermal influences is maintained over and beyond a long period of operation.

The dimensions and tolerances of these bearings with Durotect CK coated bores comply with DIN/ISO dimensions and are interchangeable.

Bearings 22317-E1-XL-T41D through 22330-E1-XL-T41D come with a Durotect CK coated bore as standard.

Ordering example: 22320-E1-XL-T41D

Advantages for vibratory machinery

- Higher operational reliability
- Prevention of damage to shafts
- Reduction in repair costs

Designation	Dimensions in mm		
	d	D	B
22317-E1-XL-T41D	85	180	60
22318-E1-XL-T41D	90	190	64
22319-E1-XL-T41D	95	200	67
22320-E1-XL-T41D	100	215	73
22322-E1-XL-T41D	110	240	80
22324-E1-XL-T41D	120	260	86
22326-E1-XL-T41D	130	280	93
22328-E1-XL-T41D	140	300	102
22330-E1-XL-T41D	150	320	108

d = Bore diameter
D = Outside diameter
B = Width

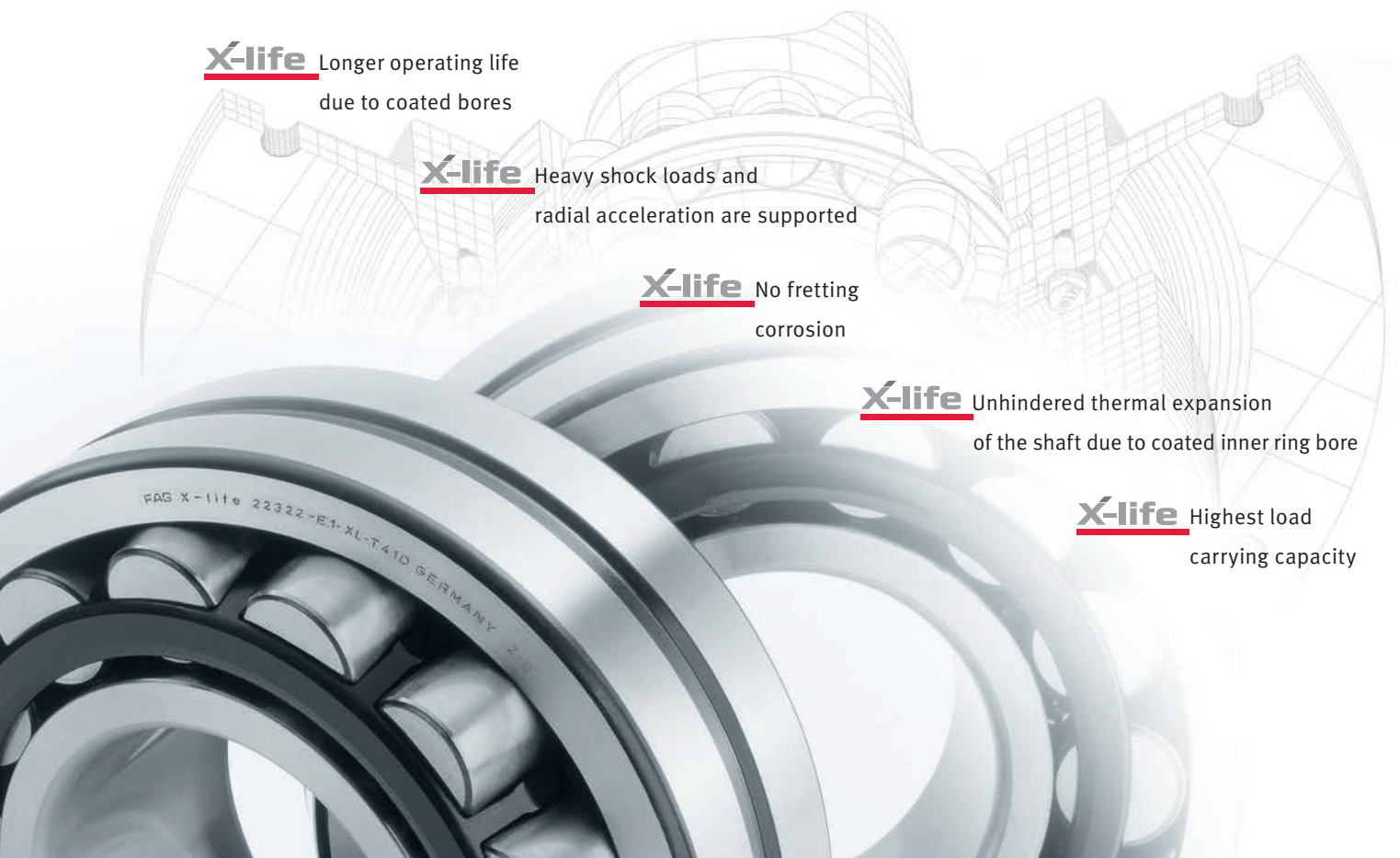
X-life Longer operating life due to coated bores

X-life Heavy shock loads and radial acceleration are supported

X-life No fretting corrosion

X-life Unhindered thermal expansion of the shaft due to coated inner ring bore

X-life Highest load carrying capacity



Coating

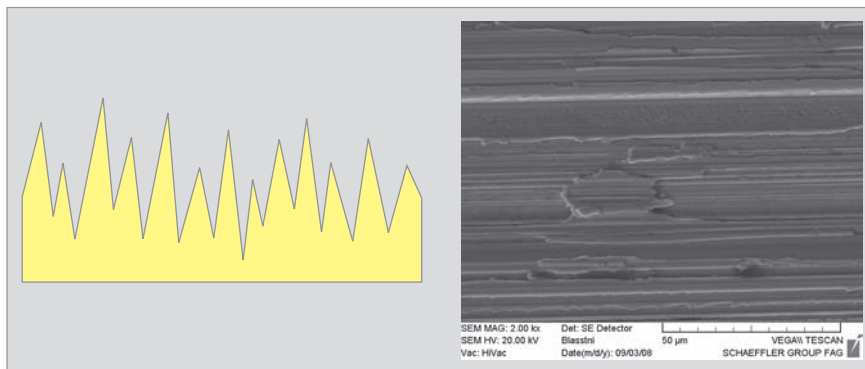
FAG special spherical roller bearings with Durotect CK coating in the bore provide effective support of severe vibrations.

Durotect CK coatings are hard chromium coatings. The special surface structure means that this hard chromium variant has special characteristics that

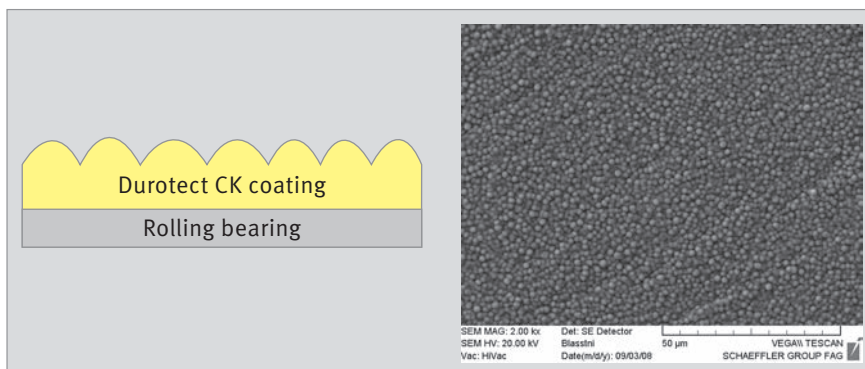
contribute to reducing friction and wear in various applications.

Durotect CK

- Layer thickness 1.5–3 µm
- Hardness 950–1300 HV
- Corrosion protection to DIN 50021 SS 120 h
- Chemical resistance



Without coating

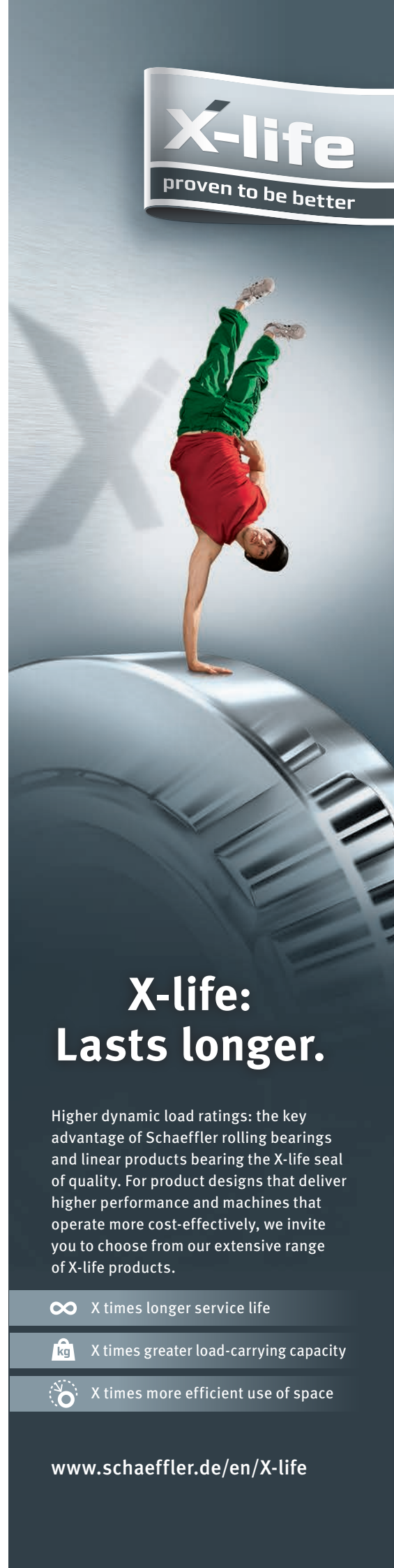


With Durotect CK coating



Sheet steel cages

- Free space for lubricants
- Good grease/oil compatibility
- Suitable for extreme operating temperatures
- High stability
- Low mass



X-life: Lasts longer.

Higher dynamic load ratings: the key advantage of Schaeffler rolling bearings and linear products bearing the X-life seal of quality. For product designs that deliver higher performance and machines that operate more cost-effectively, we invite you to choose from our extensive range of X-life products.

∞ X times longer service life

kg X times greater load-carrying capacity

⚙️ X times more efficient use of space

www.schaeffler.de/en/X-life

Schaeffler Technologies AG & Co. KG

Georg-Schäfer-Straße 30
97421 Schweinfurt
Germany

Phone +49 9721 91-0
Fax +49 9721 91-3435
E-mail FAGinfo@schaeffler.com
Internet www.schaeffler.de/en

Every care has been taken to ensure the correctness of the information contained in this publication but no liability can be accepted for any errors or omissions. We reserve the right to make technical changes.

© Schaeffler Technologies AG & Co. KG
Issued: 2017, April

This publication or parts thereof may not be reproduced without our permission.